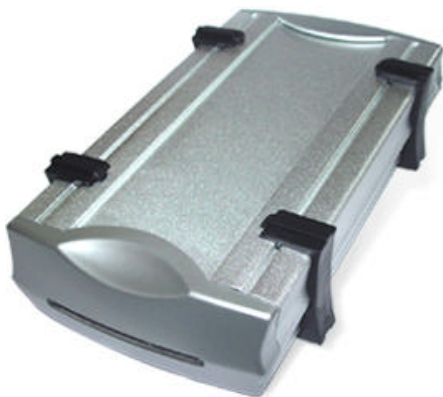


www.aixcase.com

User Manual



**TRIPLE-enclosure (USB 2.0/FireWire/SATA)
ALU for 3.5" haddisks IDE/SATA
silver (AIX-CFB3A1)**


Package Contents

In the box you will find:

- TRIPLE-enclosure (USB 2.0/FireWire/SATA) ALU for 3.5" harddisks
- USB 2.0-cable
- FireWire-cable 6-6
- SATA-cable external
- Power adaptor 5V/12V incl. power cord
- Screwdriver + screws
- Driver CD for Win98 SE

If there are any parts missing, please contact your dealer!

Foreword

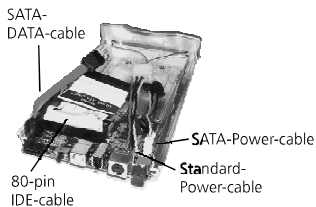
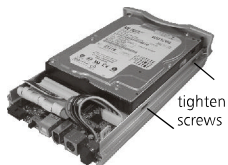
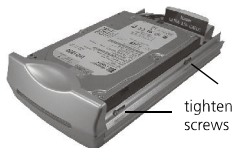
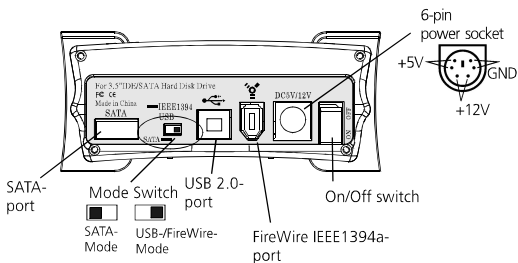
 **CAUTION!** Only use in dry locations. Only use with provided power supply. Do not open power supply!

The **AIX-CFB3A1** is a **multifunctional** enclosure, which can be used for both IDE and SATA harddisks. Irrespective from the type of the built-in harddisk, the enclosure can **externally** connected to:

SATA/FireWire IEEE 1394a/USB 2.0 (downwards compatible to USB 1.1).

Installation of a 3.5" harddisk

- a) Remove the black rubber stands.
- b) Pull out the upper part of the enclosure backwards.
- c) If you use an **IDE hardisk** with the enclosure, please **remove** the plugged-in **SATA-Data-cable** and **SATA-Power-cable**.
If you use a **SATA harddisk**, please remove the **80-pin IDE-cable**.
- d) Connect the harddisk with the adequate Data-cable and Power-cable. The plugs are protected against polarity reversal and should be easily connected to the harddisk. If not, please check if you use the plugs in the right way.

A**B****C****D****E****F**

If you use a SATA harddisks, which is fitted with both power connectors, you can choose, if you use the **Standard-Power-cable** (in this case: please remove the SATA-Power-cable) or the **SATA-Power-cable**. Only **one** cable must be connected to the harddisk.

e) Put the harddisk into the case and tighten the provided screws on both sides.

f) Attach the upper part of the enclosure to the lower part and fix both parts with the provided screws. Install back the black rubber stands.

g) Plug in the power cord of the power adaptor in an adequate outlet (100-240VAC) and connect the 6-pin-connector of the power adaptor to the enclosure.

h) Now you can choose, if you want to connect the enclosure to the **USB-port** of your PC (USB 2.0 recommended for full speed), to the **FireWire IEEE1394a-port** (if available) or **SATA-port** (if available). Please use the adequate cable.

CAUTION!

The **mode-switch** must **only be switched**, if the enclosure is **powered off**.

Only **one** cable must be connected to the enclosure (USB-cable **or** FireWire-cable **or** SATA-cable)

Using the SATA-port

The **mode-switch** on the back side of the enclosure must be on "**SATA-Mode**". The device will be recognized by the Operating System automatically after power-on, if the drivers of your SATA-port are installed correctly.

Using the FireWire IEEE1394a-port

The **mode-switch** on the back side of the enclosure must be on "**USB-/FireWire-Mode**". The device will be recognized by the Operating System automatically after power-on, if the drivers of your FireWire-port are installed correctly. If the provided FireWire-cable does not fit to your FireWire port, because you have a 4-pin-FireWire port, you have to buy a new FireWire-cable 6-4 from your dealer.

Using the USB-Port

The **mode-switch** on the back side of the enclosure must be on "**USB-/FireWire-Mode**". If you use Windows ME/2000/XP, Mac OS Version 9.0 above or an actual LINUX-distribution, your harddisk will be recognized automatically by the operating system.

For Win98 SE an additional driver must be installed from the provided Driver CD:

Do not power on the enclosure, but first insert the provided DRIVER CD into your CD-ROM drive. Open the folder **DRIVERS/PL3507** and install the driver with doubleclick (File with extension.EXE). Please follow the instructions on the screen. After finishing the installation-routine you now can power on the enclosure and Win98 SE will automatically recognize the device.

Additional Hints / Troubleshooting

- If you use a brand-new harddisk, it is necessary to partition and format the harddisk. Please follow the instructions of your operating system.
- To prevent data loss, you should always use the function "Safely remove" if you want to remove the enclosure during running PC.
- If you find an IDE harddisk which is not recognized by your PC, please try to change the configuration of the harddisk from MASTER to SLAVE or CABLE SELECT.
- Some harddisks become very hot during operation. To prevent malfunction/damage we recommend to use an adequate cooling for the enclosure - especially in hot environments, or to use another harddisk type.

Actual drivers, support information and information about other aixcase-products you will find at our website

<http://www.aixcase.com>

Manufacturer: f9com GmbH, Fronhofstr. 9, D- 52146 Würselen, Germany.
All trademarks are registered by their respective owners.
The information contained herein is subject to change without notice and is provided "as is" without warranty of any kind.

